

Engineering Manual
User Access



Notice

Information provided in this manual is subject to change without prior notice and represents no obligation on the part of ABB Automation Products.

The industrial standards and regulations (e.g. DIN, VDE, VDI, etc.) applicable in the Federal Republic of Germany are used. Outside the Federal Republic of Germany, the relevant national specifications, standards and regulations must be observed.

ABB Automation Products reserves all rights, especially those arising out of BGB, UWG, UrhG as well as out of industrial property rights (patents, utility models, trademarks, service trademarks and flavor samples).

The designations used and the products shown/mentioned in this manual have not been specifically marked regarding existing industrial property rights.

No part of this manual may be reproduced without prior written permission from ABB Automation Products.

Should you find any mistakes in this manual, please make a copy of the appropriate page(s) and send it/them to us with your comments. Any suggestions which may help to improve comprehension or clarity will also be gratefully accepted.

Please send your suggestions to:

Product Management Dept., DEAPR/LMS-Hannover, Fax: +49 (0)511 6782 701

Table of Contents

1	General Description of DigiLock	5
1.1	Procedure Overview	5
2	DigiLock Installation	6
2.1	Starting DigiLock Setup	6
2.2	Initial Password for starting DigiLock.....	8
3	Call-up of DigiLock	9
3.1	Call-up from DigiTool.....	9
3.2	Call-up from DigiVis.....	9
3.3	Call-up from the Windows NT Task Bar	9
4	DigiLock Password	10
4.1	General Note on DigiLock Password.....	10
4.2	Changing the DigiLock password	10
5	User interface	11
5.1	Menu overview DigiLock.....	11
5.2	Description of the Toolbar	11
6	Configuring users and groups with DigiLock	12
6.1	Group data, system rights	12
6.1.1	Add a new group	13
6.1.2	Delete a group	13
6.1.3	Modify group entries	13
6.2	User Data.....	14
6.2.1	Add a new user.....	15
6.2.2	Delete an user	15
6.2.3	Modify user entries	15
6.2.4	Change user password.....	16
7	DigiLock on the Operator Station	17
8	Access rights configuration for the project	18
8.1	Specification of target PC user groups in the project	18
8.2	Configuring access rights to displays and logs with DigiTool.....	19
8.3	Inheritance hierarchy of access rights	19
9	DigiLock and several PCs	21

1 General Description of DigiLock

DigiLock is a **separate auxiliary program** for the scaleable control system Freelance 2000. It provides access control for **configuration with DigiTool** and for **operation and observation with DigiVis**. The access control system can be implemented for an entire Freelance 2000 system with a single DigiLock licence.

It is possible, even **without DigiLock**, to specify during configuration with DigiTool whether or not the operator at an operator station is allowed, for example, to alter a controller set-point. This specification has influence for every operator on the operator station.

In contrast, **with DigiLock**, it is possible to give operator A permission to operate a controller but not operator B.

A prerequisite is that the set-point have been marked as adjustable in the controller parameter mask. Then with appropriate entries in the tag list, permission to operate the controller is given to operator A and denied to operator B.

In a system with DigiLock installed, users are required to **login** before using DigiVis or DigiTool.

Technical Limitations:

Number of access groups (user profiles)	max. 16
Number of users:	max. 1000

1.1 Procedure Overview

On the Engineering Station

1. Installing DigiLock on engineering station (PC with DigiTool)
2. Assign groups to project with DigiTool (Project Tree → *Edit* → *User groups*).
3. Using DigiTool, specify the project rights of each group in the tag list and in the project tree.

On the Operator Stations

1. Installing DigiLock on the operator stations (PCs with DigiVis)
2. Determine the groups and their system rights with DigiLock. (if necessary by copying the file DIGIMAT.UID per diskette from the engineering station to the control station).
3. Add user and assign to the groups.

2 DigiLock Installation

DigiLock can be installed on every PC which is to be used in the Freelance 2000 system. If there is an operator station without DigiLock, the users on this station have all rights.

DigiLock installation is carried out by the setup program, SETUP.EXE, included on the floppy disk. This program puts a file named **DIGILOCK.EXE** in the Freelance 2000 EXE directory.

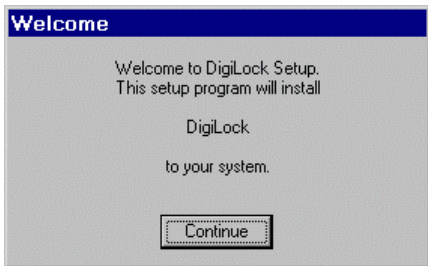
1.1 Starting DigiLock Setup

The **Setup Program** is started from the Windows Program-Manager. Put the DigiLock floppy disk in drive A.



Program Manager → File → Run → *Command Line:* a:\setup

The following dialog box will be displayed.



di4001us.bmp

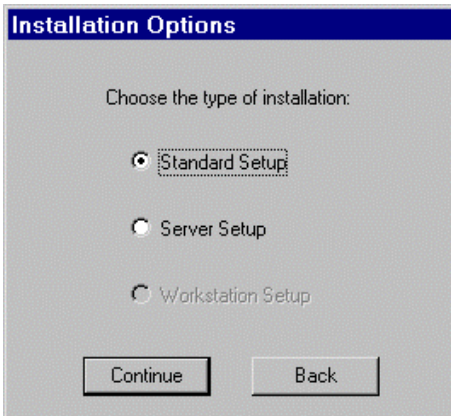
CONTINUE

The installation will continue with the next dialog box.



It is possible at any time to discontinue the installation with the **EXIT** button or to call up a help file with the **HELP** button. Both buttons are found in the lower right-hand corner of the Setup Desktop.

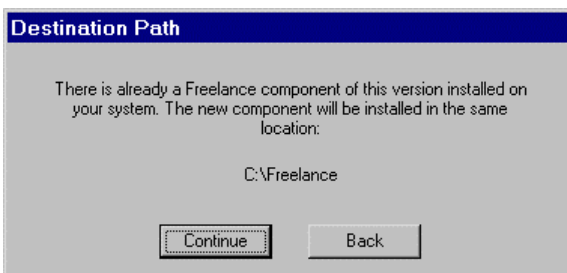




ac001us.bmp

- | | | |
|-------------------|----------------------------------|---|
| Standard Setup | <input checked="" type="radio"/> | Installation of DigiLock in the PC |
| Server Setup | <input type="radio"/> | Installation of DigiLock in the Server for later workstation setup (enter destination path) |
| Workstation Setup | <input type="radio"/> | Start setup from Server to the workstation |

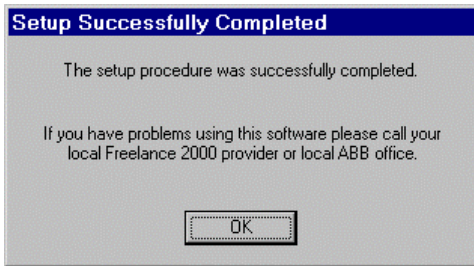
In the next window the **file path** will be defined; the default is c:\freelance. Or the disk drive is selected on which a Freelance component has already been found.



di4227us.bmp

- | | |
|----------|--------------------------------|
| CONTINUE | Opens the next dialog box. |
| BACK | Return to the previous window. |

Completion of the installation will be accompanied by the following display:



di4003us.bmp

Using the Task Bar, the program can be started with:



Start → Programme → Freelance 2000 → DigiLock



After the installation of DigiLock the user GUEST is logged in in DigiTool and DigiVis. He has no rights, that means:

- **GUEST is not able to configure with DigiTool,**
- **GUEST is not able to operate and observe with DigiVis.**

For solving this problem you have to configure users, groups and their rights immediately.

2.2 Initial Password for starting DigiLock



The **Initial Password** required to run DigiLock for the first time after installation is:

admin



When the program is first run, this password should be changed.

3 Call-up of DigiLock

There are three possibilities to call-up DigiLock:

3.1 Call-up from DigiTool



DigiTool opening menu → *Options* → *Run DigiLock*



Prerequisite: The user logged in to DigiTool must be authorised to configure DigiLock.

3.2 Call-up from DigiVis



DigiVis menu → *Options* → *Run DigiLock*



Precondition: The user logged in to DigiVis must be authorised to configure DigiLock.

3.3 Call-up from the Windows NT Task Bar



Start → *Programs* → *Freelance 2000* → *DigiLock*

4 DigiLock Password

4.1 General Note on DigiLock Password

The password must be given each time the DigiLock configuration dialog is started.



di4006uk.bmp



The initial password, which must be used when starting DigiLock for the first time after installation, is: admin

To prevent the password from being compromised, it is shown as ********* on the screen.

4.2 Changing the DigiLock password



DigiLock menu → *File* → *Password*



di4007uk.bmp

In order to set a new password, the old password must be re-entered. The new password must then be typed in twice identically. Clicking OK stores the new password immediately; it must be used for future starts of the DigiLock configuration dialog.



If you forget the password, please contact our technical service to get immediate assistance.

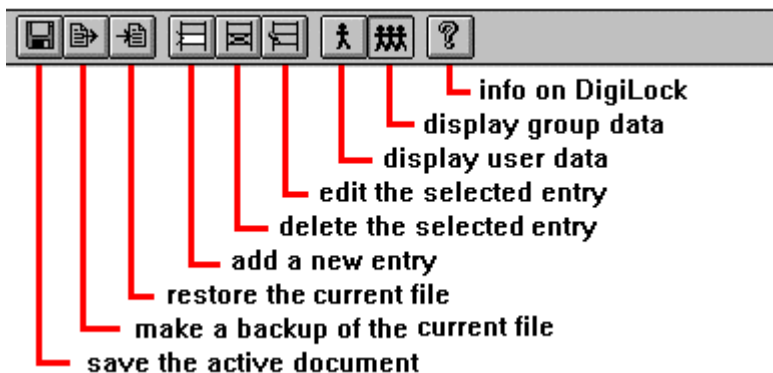
5 User interface

5.1 Menu overview DigiLock

File	<i>Save</i>	save current file
	<i>Backup</i>	backup of the current file
	<i>Restore</i>	restore file from backup
	<i>Password..</i>	change the password of DigiLock
	<i>Exit</i>	exit DigiLock
Edit	<i>Add</i>	add a new entry
	<i>Delete</i>	delete entries
	<i>Modify</i>	modify entries
	<i>Rename</i>	rename users or groups
	<i>Set password..</i>	change user password
View	<i>Users</i>	user data
	<i>Group</i>	group data
	<i>Toolbar</i>	switch on / switch off
	<i>Status bar</i>	switch on / switch off

5.2 Description of the Toolbar

All important functions are represented by buttons in the toolbar.



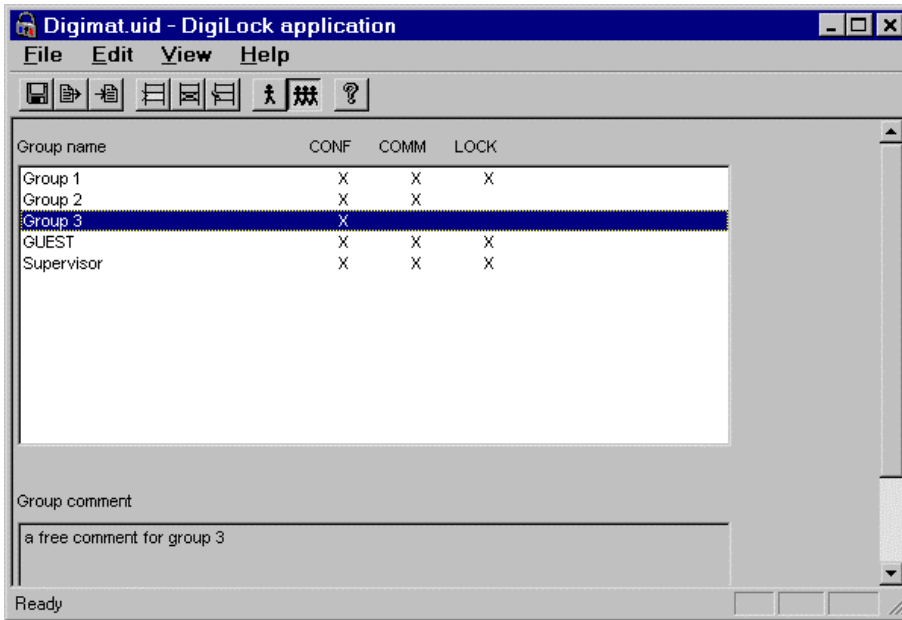
di4008uk.bmp

6 Configuring users and groups with DigiLock

6.1 Group data, system rights



DigiLock-menu → View → Groups



di4009uk.bmp


Group name	defined by user
CONF	May configure
COMM	May commission, i.e. establish connection to process station and download programs
LOCK	May start DigiLock


Group entries can be edited, deleted or created with the Edit menu or with the appropriate tool from the toolbar.




The group GUEST is always available and can't be edited, renamed or deleted. These settings apply to every project run on the associated engineering station.

6.1.1 Add a new group

 → *Edit* → *Add* → Enter a new group
or


 → Button “Add” from toolbar → Enter a new group


6.1.2 Delete a group


 → *Edit* → *Delete*
or

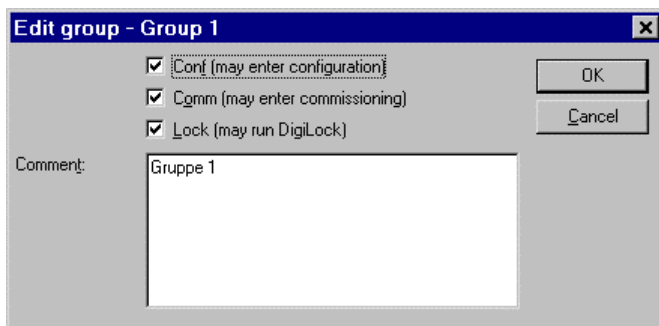
 Select group → Button “DELETE” from toolbar

6.1.3 Modify group entries

 Select group entry → *Edit* → *Modify*
or "edit group data"

 Double clicking on group entry
or

 Select group entry → Button “MODIFY “ from toolbar

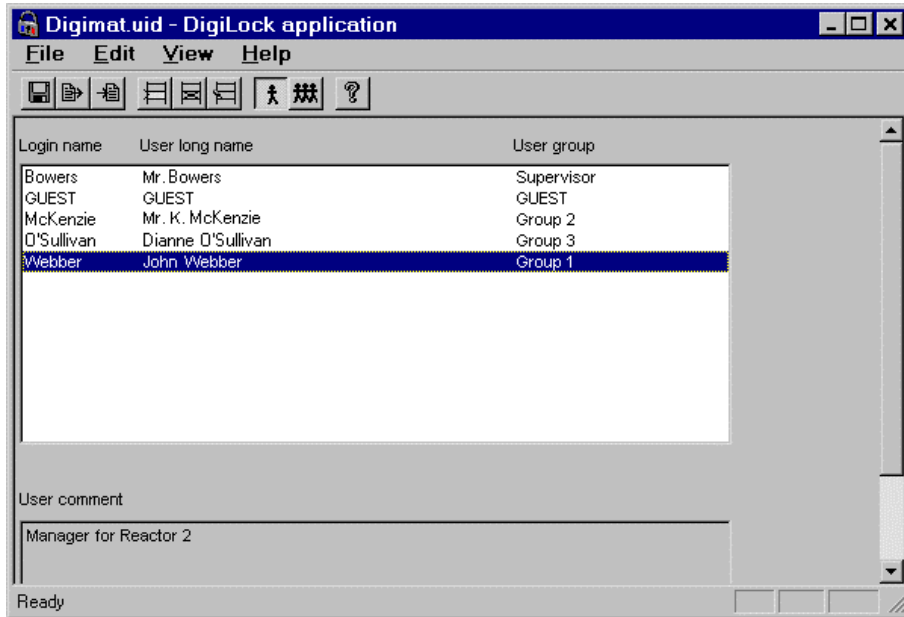


di4015uk.bmp

6.2 User Data



DigiLock-menu → View → User



di4010uk.bmp

User entries can be edited, deleted or created with the *Edit* menu or with the appropriate tool from the tool bar.



Only the user GUEST can't be edited, renamed or deleted.



A user obtains the system rights of the group assigned to him/her.

Login name Name of the user, to be used for logging in into system. May be 8 characters long.

User long name: Arbitrary text. Preferably the exact identification of user.

User group Name of the group the user is assigned.



A user can be assigned to several groups through different login names.

6.2.1 Add a new user



→ *Edit* → *Add* → Enter a new user
or



→ Button “Add” from toolbar → Enter a new user

6.2.2 Delete an user



Select user entry → *Edit* → *Delete*
or



Select user entry → Button “DELETE” from toolbar

6.2.3 Modify user entries



Select user entry → *Edit* → *Modify* or



Double clicking on user entry or



Select user entry → Button “MODIFY “ from toolbar

Edit user - Webber

Long name:

Group:

Comment:

di4014uk.bmp

6.2.4 Change user password



A **user's password** is initially set to the corresponding login name. The password can be changed by the user, either in DigiVis or in DigiTool.

If a user changes his password, the new password is not changed for all PCs in the Freelance system. The user has to change his password on every PC in the Freelance 2000 system, if he wants to have the same password everywhere as the configuration of DigiLock is stored locally. See also **page 21, DigiLock and several PCs**.


If necessary the supervisor can input a new password for each user.



Menu DigiLock → *Edit* → *Set password*

7 DigiLock on the Operator Station

Group and user data must also be configured on every control station. This can be done in the same manner as described on **page 12, Configuring users and groups with DigiLock**.

 To spare unnecessary work, the file Digimat.UID from the engineering PC can be copied to operator stations after configuring the groups and users.

On the operator station (with DigiVis), the DigiLock operator sees the following:

- Each user must log in before being allowed to perform any operations.
- The user name always appears in the status line.
- Entries or operator actions recorded in the signal sequence log can include the login name.

Standard user names

- NOLOCK No DigiLock licence
- GUEST No one logged on, e.g. just after DigiVis is started
- SYSTEM System-initiated operation events (may appear in the signal sequence log)

When a user without proper authorisation attempts to operate a display, the following message box will pop up:



di4011uk.bmp

In addition, the lack of authorisation will be signalled in the status line by highlighting the user name and focus icon in red.

8 Access rights configuration for the project

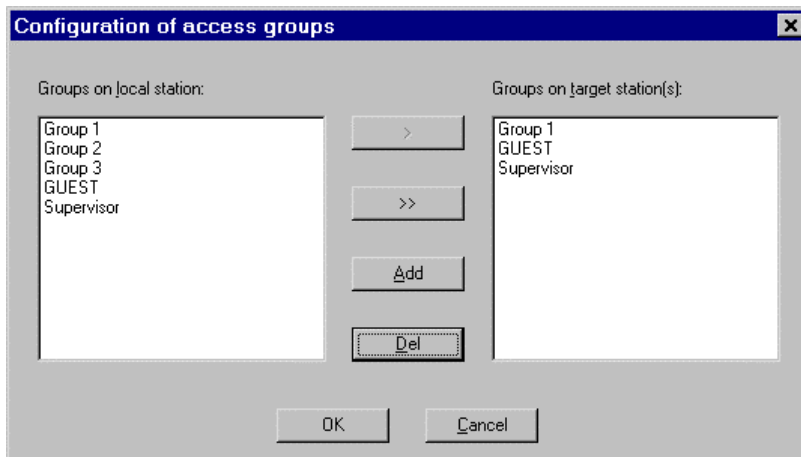
8.1 Specification of target PC user groups in the project

Different user groups can be defined on the engineering station and the operator stations. For this reason, the user groups of the target PC must be specified in the project.

The project tree has a submenu for configuration of access groups.



Edit → Access groups



di4005uk.bmp

When a new group is added, it is, by default, given "visualise" but no "operate" access rights to all currently existing objects (see further below).

- > The selected local engineering station groups are added to this project
- >> All groups on the local engineering station are added to this project.
- ADD Add a new access group to this project.
- DEL Delete an user group from the project.

8.2 Configuring access rights to displays and logs with DigiTool.

Which **faceplates** can be accessed by which user groups is specified in the DigiTool **tag list**. See also DigiTool 1 manual.



Project tree → *System* → *Tag list*

→ select one or more tags by dragging the mouse over them (with the mouse button depressed)

→ *Edit* → *Access rights*

Which **standardised displays, logs and graphic displays** can be accessed by which access groups is specified in the DigiTool **project tree**



Project tree → select one or more displays in the project tree by dragging to mouse over them (with the mouse button depressed)

→ *Edit* → *Access rights*

8.3 Inheritance hierarchy of access rights

On filing an new object, this object will obtain the access rights of its next-higher project tree node (parent node) as a default entry.

The following **inheritance hierarchy** has been established in order to simplify the configuration

- An existing object has to get the modified access rights applying to its next-higher project tree node (parent node).



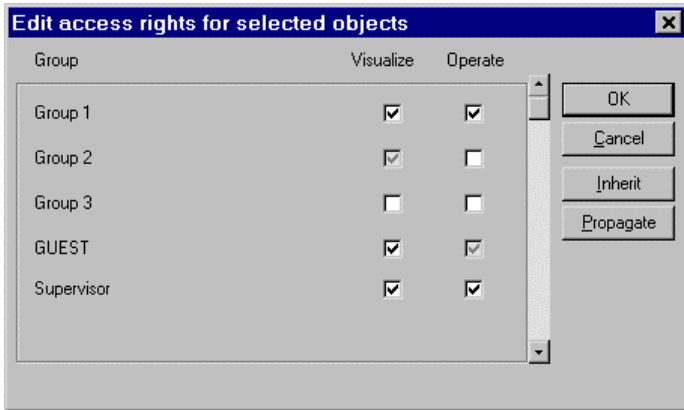
access rights dialog → INHERIT

- The rights currently applying to a project tree node can be forcibly assigned to all of the objects under it (it's children).



access rights dialog → PROPAGATE

When an object is moved or copied, its rights (or those of the copy), remain unchanged.



di4012uk.bmp

- Access right applies to **all** selected objects (displays or tags)
- Access right applies to only some of the selected objects.
- Access right does not apply to any of the selected objects (displays or tags).
- INHERIT Set the rights over each of the selected objects to those of the project tree node above it.
- PROPAGATE Force the currently configured access rights applying to the selected project tree node to apply to all of the objects below it (child objects).


9 DigiLock and several PCs

If a user changes his password on a PC, the new password is not changed for all PCs in the Freelance system. The configuration of DigiLock (user names, passwords and the assigned user groups) is stored in a file called DIGIMAT.UID in the Windows directory.

The user has to change his password on every PC in the Freelance 2000 system, if he wants to have the same password everywhere.

Also it is possible by copying the file DIGIMAT.UID to the other PCs with a floppy disk. This is not possible if the operator station is active.

 The configuration of DigiLock is local.

 This makes it possible for one user to be assigned to different groups on several control stations and therefore to obtain different rights, depending on which control station is logged in.

Index

A

Add a new group	13
Add a new user	15

C

Call-up of DigiLock	9
Change user password	16

D

Delete a group	13
Delete an user	15
DigiLock and several PCs	16, 21

G

Group data	12
Group GUEST	12

I

Inherit	19
Inheritance hierarchy of access rights	19
Initial password	8, 10
Installation	6

M

Menu overview	11
Modify group entries	13
Modify user entries	15

P

Password	10
----------	----

S

Standard user names	17
Guest	17
Nouser	17
System	17

T

Technical Limitations:	5
Toolbar	11

U

User Data	14
User groups of the target PC	18
User GUEST	14



Gross Automation, 1725 South Johnson Road, New Berlin, WI 53146, www.ssacsales.com, 800-349-5827